

1 Match the clocks to the times.



quarter to 2



quarter to 12



quarter to 7



quarter to 3

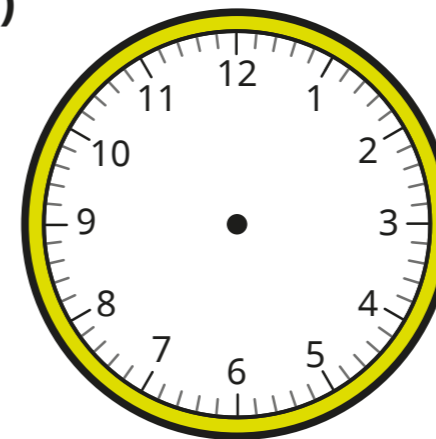
2 Complete the sentence.

At quarter to, the minute hand points

to

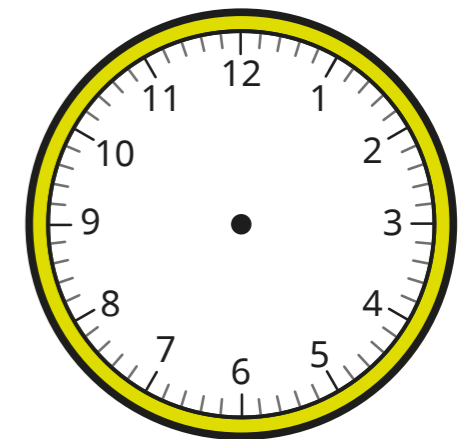
3 Draw hands to show the time on each clock.

a)



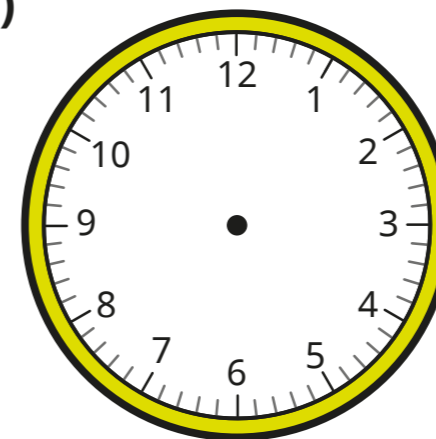
quarter to 8

c)



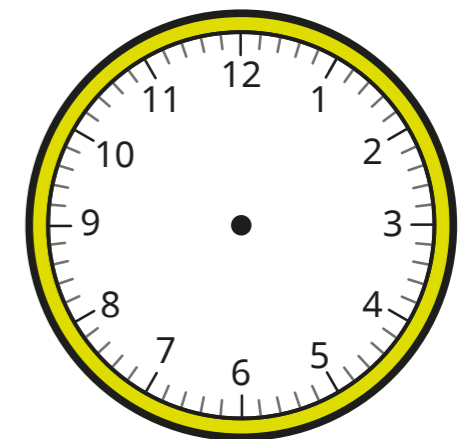
quarter to 9

b)



quarter to 2

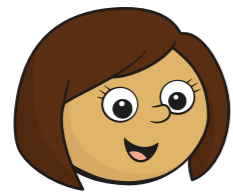
d)



quarter to 3



4 Kim is telling the time.



The time is quarter to 4, so the hour hand is closer to the 4 than the 3

Is Kim correct? \_\_\_\_\_

Explain your answer.

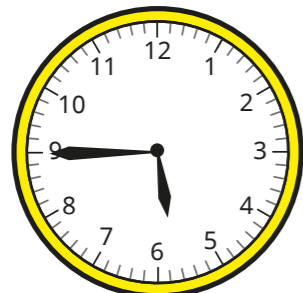
5 Write the time shown on each clock.

Use the words to help you.

quarter to

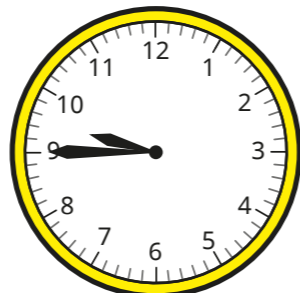
quarter past

a)



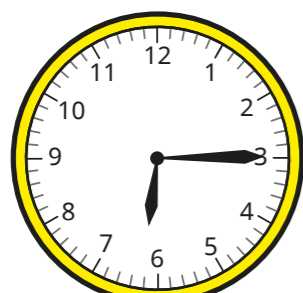
\_\_\_\_\_

c)



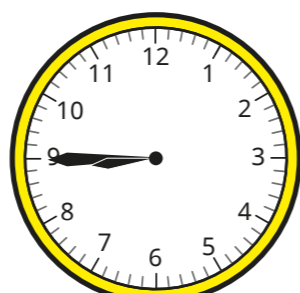
\_\_\_\_\_

b)



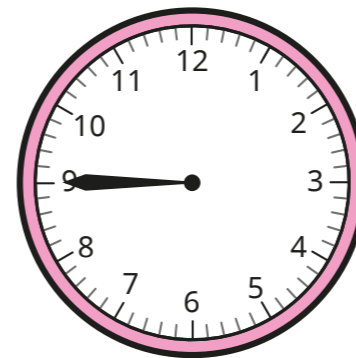
\_\_\_\_\_

d)

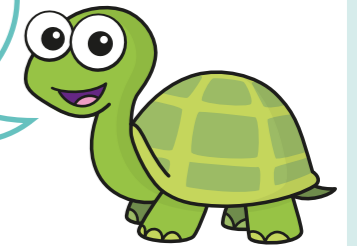


\_\_\_\_\_

6 The hour hand has fallen off the clock.



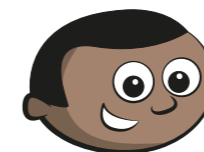
I think that the time could be 10 minutes past 9



What mistake has Tiny made?

\_\_\_\_\_  
\_\_\_\_\_

7 Mo has a piano lesson between 5 o'clock and 6 o'clock.



The lesson starts when the minute hand is three-quarters of the way around the clock.

What time is Mo's piano lesson?

\_\_\_\_\_